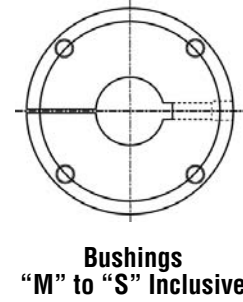
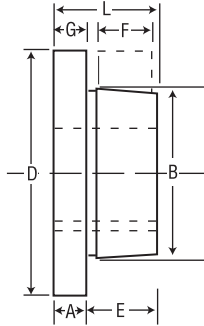
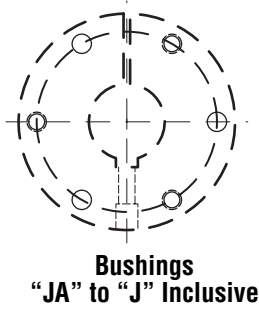


★F = Length of Mating Bore

★★G = Gap Between QD Bushing and Mating Hub



QD Bushings — Steel

Bushing	Dimensions (Inches)								Cap Bolt Circle	Screws Required	Stock Bore Range			Average Weight (Approx.)
	A	B	D	E	F	G	L	Maximum						
								Minimum			Standard Keyway	Shallow Keyway		
SF-STL	5/16	3.125	4%	1 1/2	1 1/4	1/8	2 1/16	3%	3 3/8 x 2	1/2	2 1/16	2 1/16	3.0	
E-STL	3/8	3.834	6	1%	1%	1/8	2%	5	3 1/2 x 2 1/2	7/8	2%	3%	10.0	
F-STL	13/16	4.437	6%	2 1/16	2 1/2	3/16	3%	5%	3 3/16 x 3 3/16	1	3 3/16	4	11.5	
J-STL	1	5.148	7%	3%	3 3/16	3/16	4%	6%	3 3/8 x 4 1/2	1 1/16	3%	4 1/2	18.0	
M-STL	1 1/4	6.500	9	5 1/2	5 3/16	3/16	6%	7%	4 3/8 x 6 1/2	2	4%	5 1/2	37.0	
N-STL	1 1/2	7.000	10	6%	6 1/4	7/16	8%	8%	4 1/2 x 8 1/2	2 1/2	5%	5%	57.0	

Bushing	Bores	Keyway
SF-STL	2% - 2 1/16	3/8 x 3/16
	2% - 2 1/8	3/8 x 1/16
	2 1/8 - 2 1/4	3/8 x 1/8
E-STL	7/8 - 2 1/8	STD.
	2 1/8 - 3 1/4	3/4 x 1/8
	3 1/8 - 3 1/2	7/8 x 1/16
F-STL	1 - 3 3/16	STD.
	3% - 3 3/8	7/8 x 3/16
	3 3/8 - 3 1/2	1 x 1/8
	4	NONE
J-STL	3 3/16 - 3 3/8	STD.
	3 3/8 - 4 1/2	1 x 1/8
M-STL	2 - 4%	STD.
	4 3/16 - 5 1/2	1 1/4 x 1/4
N-STL	2 1/2 - 5%	STD.
	5 1/16 - 5 1/2	1 1/4 x 1/4
	5 1/16 - 5 1/4	1 1/2 x 1/4

Shallow Key Dimension — Standard			
Key Seat	Key	Keyway	Key
1/4 x 1/32	1/4 x 3/32	3/4 x 1/8	3/4 x 1/8
1/4 x 1/16	1/4 x 3/16	7/8 x 1/16	7/8 x 1/2
3/8 x 1/32	3/8 x 1/32	7/8 x 3/16	7/8 x 5/8
3/8 x 1/16	3/8 x 1/4	1 x 1/8	1 x 5/8
3/8 x 1/8	3/8 x 3/16	1 1/4 x 1/4	1 1/4 x 7/8
1/2 x 1/32	1/2 x 1/32	1 1/2 x 1/8	1 1/2 x 7/8
1/2 x 1/16	1/2 x 3/16	1 1/2 x 1/4	1 1/2 x 1
1/2 x 1/8	1/2 x 3/8	1 3/4 x 1/8	1 3/4 x 3/4
5/8 x 1/16	5/8 x 3/8	1 3/4 x 1/4	1 3/4 x 7/8
3/4 x 1/16	3/4 x 1/16	2 x 1/4	2 x 1

Standard Keyway and Key Dimension		
Bores	Keyway	Key
7/8	3/16 x 3/32	3/16 x 3/16
1 1/16 - 1 1/4	1/4 x 1/8	1/4 x 1/4
1 1/8 - 1 3/8	5/16 x 3/32	5/16 x 3/16
1 1/4 - 1 3/4	3/8 x 3/16	3/8 x 3/8
1 3/8 - 2 1/4	1/2 x 1/4	1/2 x 1/2
2 1/8 - 2 1/4	5/8 x 3/16	5/8 x 5/8
2 1/4 - 3 1/4	3/4 x 3/8	3/4 x 3/4
3 1/8 - 3 3/4	7/8 x 1/16	7/8 x 7/8
3 3/8 - 4 1/2	1 x 1/2	1 x 1
4 1/8 - 5 1/2	1 1/4 x 3/8	1 1/4 x 1 1/4
5 1/8 - 6 1/2	1 1/2 x 3/4	1 1/2 x 1 1/2
6 1/8 - 7 1/2	1 3/4 x 3/4	1 3/4 x 1 1/2
7 1/8 - 9	2 x 3/4	2 1/2 x 1 1/2
9 1/8 - 11	2 1/2 x 7/8	--
11 1/8 - 13	3 x 1	--

Shallow Key Dimension — Steel			
Key Seat	Key	Keyway	Key
1/4 x 1/32	1/4 x 5/32	3/4 x 1/16	3/4 x 7/16
1/4 x 1/16	1/4 x 3/16	3/4 x 1/8	3/4 x 1/2
3/8 x 1/32	3/8 x 1/32	7/8 x 1/16	7/8 x 1/2
3/8 x 1/16	3/8 x 1/4	7/8 x 3/16	7/8 x 5/8
3/8 x 1/8	3/8 x 3/16	1 x 1/8	1 x 5/8
1/2 x 1/32	1/2 x 1/32	1 1/4 x 1/4	1 1/4 x 7/8
1/2 x 1/16	1/2 x 3/16	1 1/2 x 1/4	1 1/2 x 1
1/2 x 1/8	1/2 x 3/8	1 3/4 x 1/8	1 3/4 x 3/4
5/8 x 1/16	5/8 x 3/8	1 3/4 x 3/8	1 3/4 x 1
3/4 x 3/16	3/4 x 1/2	2 x 1/4	2 x 1

Bushing	Plain Bores Not Split
SH-STL	1/2
SD-STL	1/2
SK-STL	1/2
SF-STL	1 1/16
E-STL	7/8 - 1 1/16
F-STL	1 - 2 1/16 - 2 1/8
J-STL	1 1/16 - 2 1/8
M-STL	2 - 2 1/16
N-STL	2 1/16 - 4 1/8

Reborable QD bushings made of Stainless Steel are available in many sizes. Non stock sizes are available on MTO basis.